

# COMMON GROUND

## ORGANIC GARDEN SUPPLY AND EDUCATION CENTER

559 College Ave. • Palo Alto • California 94306 • 650.493.6072  
www.commongroundinpaloalto.org



WINTER 2002

## WINTER CLASS SCHEDULE

### WE LOVE OUR NEW STORE!

How wonderful it is to see our annual and perennial customers come into the new store with their ooh and aaahs reflecting how much they like the new store. We also like the new store, especially the hot water, indoor heating, abundance of light and your presence. We have use of the neighbors' conference room for the gardening classes here in the building.

Please tell your friends about our new location and our new website. We are happy to extend our community and customer base. You help so much by spreading the word!

### GET YOUR NEWS ON-LINE

Kindly give us your e-mail for our mailing list so we can send you the newsletter and gardening classes via the computer!



### OPEN HOUSE PARTY AND FAREWELL TO PATRICK PARTY!!!!

**Our beloved Patrick is going to New Zealand to travel.**

**Time: Saturday, December 15 — 6 to 8:30 pm**

**Location: Common Ground Garden Supply**

**Bring : Potluck dish to share and serving utensil(s).  
Please label your food: vegetarian, dairy free,  
100% organic, from your garden, etc.**

**Special : Belly Dancing Performance!**

### NEW ASSISTANT MANAGER

Welcome to our new Assistant Manager, Severin Marthe. He comes to us with a vast array of experiences that will greatly contribute to Common Ground. Severin is a calm and energetic man with integrity, who is dedicated to sustainable living and gardening. We are fortunate to have him join our team.

### THANK YOU TO ALL THE VOLUNTEERS AND DONORS

Common Ground would like to give a big THANK YOU to the more than 50 volunteers who helped us move into our new store. We feel so very grateful for our many volunteers and the diverse ways they contribute their talents and love. Volunteers are our greatest natural resource.

We had generous snack donations from our local neighborhood businesses: JJ&F Market, Country Sun, and Printers Inc Cafe. California Paint and Wallpaper donated 10 gallons of protective coating for our new fence.

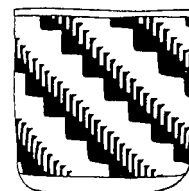
### VOLUNTEER EXTRAORDINAIRE: EVA HENIN

Volunteer Extraordinaire: Eva Henin is a huge asset as designer and creator of our fabulous website. She also comes in weekly on Thursdays when her skills are appreciated as she does special computer-related projects, writes press releases and information sheets, creates and updates data bases, does valuable research, helps out with whatever needs to be done, and . . . brings her homemade bread.

### NEW STORE ITEMS!

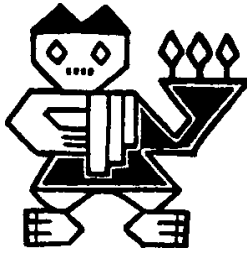
**New!!!** Deerproof Flower Garden Seed Mix. While there are no guarantees, this mix has withstood extensive testing. A truly colorful and attractive mix containing annuals and perennials.

**Blueberries !** Yes, blueberries do well in the Bay Area and we will have them for sale beginning in February. A helpful blueberry handout sheet will also be available!



**New!!** Decorative ceramic pots for inside and outside plants.

**STORE HOURS: Tues.- Fri. (10:00 - 5:30); Sat. and Sun. (10:00 - 5:00). Closed Mondays.**



# WINTER CLASSES 2002

Please register and prepay in advance by mail or in person. Seniors and low-income persons may request a \$3 discount on classes. Some classes do extend beyond the scheduled time.

## Jan., Feb. & March Gardening Class Schedule

### ROSE PRUNING

10:30-12:30, \$19

Shape your rose bushes! Encourage profuse flowering with winter pruning and proper care. Learn about the very best soil and amendments. Drainage, planting, and mulches will be discussed. The class will go to a nearby garden for a demonstration. *Carole is an energetic and articulate horticulture consultant with 20 years of experience.*

Carole Kraft

Saturday, January 12

### FRUIT TREE PRUNING

10:30-2:00, \$22

Bring your pruning shears! Kevin will show you how to identify dead wood and how to maximize health and fruit production. This class will meet at Common Ground, then proceed to a local orchard. Please dress appropriately and bring a bag lunch. This class happens rain or shine. *Kevin is a Certified Arborist with a degree in horticulture.*

Kevin Raftery

Saturday, January 19

### EASY SPRING HARVEST

10:30-12:00, \$17

You can enjoy delicious wild and garden-grown foods long before the usual spring planting season begins. Learn how to grow and use the especially easy, tender and delicious crops that you can be harvesting at this time of the year. Taste samples will be included. *Pam is the author of Golden Gate Gardening.*

Pam Pierce

Saturday, January 26

### BENEFICIAL BUGS

10:30-12:00, \$17

You may have heard of "beneficial insects", but do you know how to recognize and protect them in your garden? and, is this insect "good" or "bad"? Our slide show will help. Let's get ahead of the bugs this year. *Ruth holds a M.S. in Biology and has been practicing entomology in our area for 28 years. She is also the author of one of our best selling books: Rebugging your home & garden.*

Ruth Troetschler

Saturday, February 2



### \*SEED PROPAGATION

10:30-12:30, \$19

Learn about GROW BIOINTENSIVE seed propagation techniques that can help you have a more productive and efficiently managed garden. Subjects covered will include soil mixes, using flats, transplanting, watering and planting by the phases of the moon. There will also be some hands-on practice for pricking out seedlings. *John is the Executive Director of Ecology Action and author of the book, How to Grow More Vegetables.*

John Jeavons

Saturday, February 9

### COMPOSTING

10:30-12:00, \$17

Composting is the basis for growing the healthiest, most nutritious, pest- and disease-resistant plants. Learn the easiest and most effective way to do it! We will walk to a neighborhood site to actually build a pile. Bring a 5-gallon bucket of "green material" (grass clippings, weeds, and / or non-meat kitchen scraps). *Jan is past staff at Common Ground and really knows how to do biointensive composting.*

Jan Buck

Saturday, February 16

\* A GROW BIOINTENSIVE<sup>SM</sup> Class

## EASY EDIBLE GARDENING

10:30-12:00, \$17

Fresh, delicious and time-efficient gardening is possible. Wendy will be teaching garden design, layouts, and soil fertility. She will inspire you with a crop calendar and timing schedule as well as many tips for small gardens. *Wendy was the horticulture advisor and variety trials manager for Shepherd's Garden Seeds during her 10 years with the company. She joins us today from Santa Rosa where she manages a 5-acre organic garden at Santa Rosa Junior College's Shone Farm.*

Wendy Krupnick

Saturday, February 23

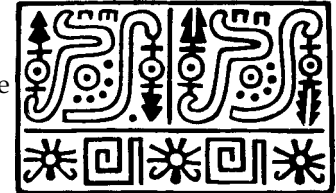
## WORM COMPOSTING

10:30-12:00, \$17

"Everything you always want to know about worms . . . but were afraid to ask." Come join us and learn all about this tidy and very efficient way to turn all your kitchen scraps into botanical gold. *Alane O'Rielly Weber, "the worm lady of San Mateo", has been nurturing her compost worms for 13 years and teaching vermicomposting for the County of San Mateo for the last 4 years.*

Alane O'Rielly

Saturday, March 2



## CALIFORNIA NATIVES

10:30-12:00, \$17

Learn about the fun and exciting plants and flowers local to where we live. California annuals and perennials are beautiful and resilient. They also attract many birds, butterflies and beneficial bugs that make your garden vibrantly healthy. *Susie, a local garden and landscape consultant, owns Mader Green, and has been designing gardens for over 16 years.*

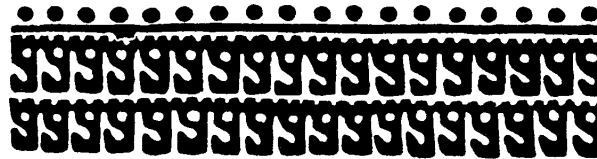
Susie Mader

Saturday, March 9

## \*DOUBLE- DIGGING

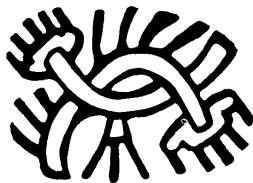
10:30-12:30, \$19

Loosening the soil 24 inches deep to build soil structure is easy if you know how! Plants grow better, the garden needs less water, and weeds come out more easily. Double-digging is the first step in a GROW BIOINTENSIVE garden. This class includes a hands-on demonstration at a nearby garden. *Carol is co-author of The Sustainable Vegetable Garden and is the manager at the Ecology Action Research Garden in Willits.*



Carol Cox

Saturday, March 16



## \*COMPANION PLANTING

1:30-3:00 +, \$17

Discover how to make efficient use of your own garden space and the plants' natural properties by using methods that have worked for centuries. Learn how to enhance your garden's health and productivity while discouraging harmful insects. Companion planting is one of the elements in a GROW BIOINTENSIVE garden. *Carol is co-author of The Sustainable Vegetable Garden and is the Garden Manager at Ecology Action Research Garden/ Mini-Farm in Willits.*

Carol Cox

Saturday, March 16

## STARTING YOUR VEGETABLE GARDENING

10:30-12:00, \$17

Many delicious vegetables can be planted now. The easiest and most effective ways to have produce year-round will be taught. Compared to conventional planting, Adrienne and her husband get three times the yield in half the space. *Adrienne is a vibrant 78-year-old artist who grows nearly all her own vegetables and fruits on one-fifth of an acre in Palo Alto.*

Adrienne Duncan

Saturday, March 23

## DRIP IRRIGATION

10:30-12:30, \$19

This is a hands-on class showing the simplicity of installing and maintaining a drip system. We will discuss the advantages and disadvantages of drip irrigation versus a spray system. Pressure reduction and filtration as well as irrigation controllers will be discussed. Class will start at Common Ground then go to a nearby site. *Frank has a degree in horticulture and teaches at Foothill College and for the Landscape Contractors Association. His company The Village Gardener has won numerous awards in flower design, landscape management and installation.*

Frank Niccoli

Saturday, March 30

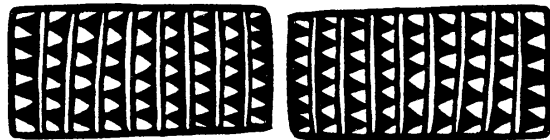
# ABOUT COMMON GROUND

Common Ground Organic Garden Supply and Education Center is a non-profit project of Ecology Action, an organization dedicated to GROW BIOINTENSIVE food-raising. Biointensive gardening/mini-farming, researched and developed by Ecology Action over a twenty-seven-year period, allows you to grow all your food while maintaining and improving the fertility of the earth. Compared to commercial agriculture, GROW BIOINTENSIVE gardening/mini-farming uses as little as 1/8 the water, 1/2 or less the purchased fertilizer, and 1/100 the energy per pound of food produced. With only hand tools and the skills and the knowledge of GROW BIOINTENSIVE food-raising, you can produce two to six times more food from your garden. This method is being taught and used in over 100 countries worldwide.

We offer gardening classes throughout the year and have an extensive reference library on Biointensive and organic gardening and related subjects. We offer many organic and open-pollinated vegetable, flower, herb and compost (cover) crop seeds for sale in bulk or packaged. We also stock organic fertilizers, fine gardening tools, books, natural pest control products, organically grown vegetable and herb seedlings and perennials.

**Please visit Common Ground Organic Garden Supply and Education Center Tuesday through Friday from 10:00 a.m. to 5:30 p.m. and Saturday and Sunday from 10:00 a.m. to 5:00 p.m. The store is closed Mondays throughout the year.**

**Patricia Becker, Severin Marthe, Judith Jacoby, Karen Converse, and Ryan Gross**



## WINTER SATURDAY CLASS CALENDAR

Jan. 12	<b>Rose Pruning</b> with Carole Kraft
Jan. 19	<b>Fruit Tree Pruning</b> with Kevin Raftery
Jan. 26	<b>Easy Spring Harvest</b> with Pam Pierce
Feb. 2	<b>Beneficial Bugs</b> with Ruth Troetschler
Feb. 9	<b>*Seed Propagation</b> with John Jeavons
Feb. 16	<b>Composting</b> with Jan Buck
Feb. 23	<b>Easy Edible Gardening</b> with Wendy Krupnick
Mar. 2	<b>Worm Composting</b> with Alane O'Rielly
Mar. 9	<b>California Natives</b> with Susie Mader
Mar. 16	<b>*Double-Digging</b> with Carol Cox
Mar. 16	<b>*Companion Planting</b> with Carol Cox
Mar. 23	<b>Starting Your Vegetable Gardening</b> with Adrienne Duncan
Mar. 30	<b>Drip Irrigation</b> with Frank Niccoli



Winter Schedule  
design and  
layout by  
Glenda Jones

\* A GROW BIOINTENSIVE<sup>SM</sup> Class

COMMON GROUND  
559 College Ave,  
Palo Alto, CA 94306  
650.493.6072



Please recycle.